



USB LAVA LAMP USER MANUAL

⚠️ Minimum system requirements for running the Dream Cheeky USB Lava Lamp

- PC and Macintosh platforms
- 32 MB of system RAM
- One available USB 1.1 port
- 50 MB available hard disk space

⚠️ Before using the product, carefully read this manual and retain it for future reference.

This packaging contains:



USB Lava Lamp X1

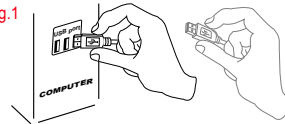
Features

1. USB Powered
2. Bright Led Light
3. On/Off Switch
5. Mac & PC compatible

🔌 USB Connection

1. Connect the USB cable attached to the Lava Lamp to a USB port located on your PC prior to playing with it.

Fig.1



⚠️ **Note:** Using a USB HUB or docking station may result in the loss of power to the Lava Lamp. This could create the Unit to not work properly.

⚠️ Safety

This product has been designed with the highest concern for safety. However, any electrical device, if used improperly, has the potential of causing fire, electrical shock or personal injury. To help ensure accident-free operation, follow these guidelines:
Stop use, unplug the USB cord, immediately if the device functions in an abnormal manner, produces unusual sounds or smells or becomes too hot to touch.

▶ Use and Handling

1. Do not use near water.
2. Do not expose the Lava Lamp to high temperatures, high humidity, or direct sunlight.
3. Do not expose the Lava Lamp to dust, smoke or steam.
4. Do not allow small particles to get into the Lava Lamp.
5. Do not place the Lava Lamp on surfaces that are unstable or subject to vibration.
6. Do not throw or drop the Lava Lamp or subject it to physical shock.
7. Be sure to power OFF before unplugging the Lava Lamp from your PC.
8. The Lava Lamp contains sensors and should be handled with care.

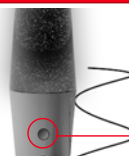
Introduction

This demonstrates how to use the Lava Lamp. Use these instructions to maximize your playing capability.
Note: Please be sure to plug your Lava Lamp into a USB port in your PC prior to playing with the unit.

▶ Plug & Play



USB Lava Lamp



Press this button for ON and OFF.

▶ Cleaning

1. For safety reasons, unplug the USB cord from your PC before cleaning.
2. Wipe gently with a damp cloth, and then dry the surface.
3. Do not use solvents or other chemicals to clean the exterior of the Lava Lamp.

▶ General

1. Should the Lava Lamp perform unexpected functions, unplug the unit and then reset your computer.
Note: See www.dreamcheeky.com for full online support link and trouble-shooting